

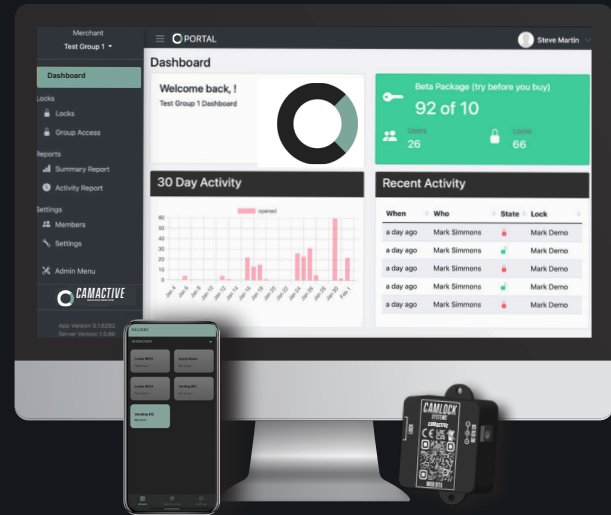


***CAMACTIVE***  
*WIRELESS ACCESS CONTROL SYSTEM*

# WHAT IS CAMACTIVE?

CAMACTIVE from Camlock Systems is a data driven access control system which allows users to control access to locks from a mobile device. By logging the data associated with the locking system, CAMACTIVE provides invaluable information on the process.

iOS and Android compatible, CAMACTIVE gives users datapoints detailing exactly when, where and by whom a machine is accessed. User permissions can be granted and revoked and one time access can be provided if required, negating the need for mechanical keys and other access peripherals such as cards. By monitoring access, the portal gathers data to form user and lock specific reports, which can be used to spot trends and highlight problems for process improvement.



Access Control



Keyless Operation



Audit Trails



Retrofittable

# BENEFITS OF CAMACTIVE



## Bluetooth

The app connects to CAMACTIVE using Bluetooth technology



## Dedicated app

When granted permissions, the app can be used to access locks



## Web portal

Administrators can add and remove users, see reports and get real time notifications



## Control user permissions

Grant and revoke permissions as and when you need to. See who, when and where a machine is being accessed



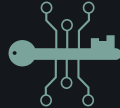
## Limit access scheduling

Restrict user permissions for time sensitive applications. Create access groups for route management



## Customisable reports

Reports can be generated to suit individual requirements



## Data encryption

Proprietary end to end TLS 1.2 encryption with 128 bit AES keys on transport from mobile to server.



## Secure, offline access

One-time access can be granted for a set duration without the need for an internet connection



## Multiple lock choices

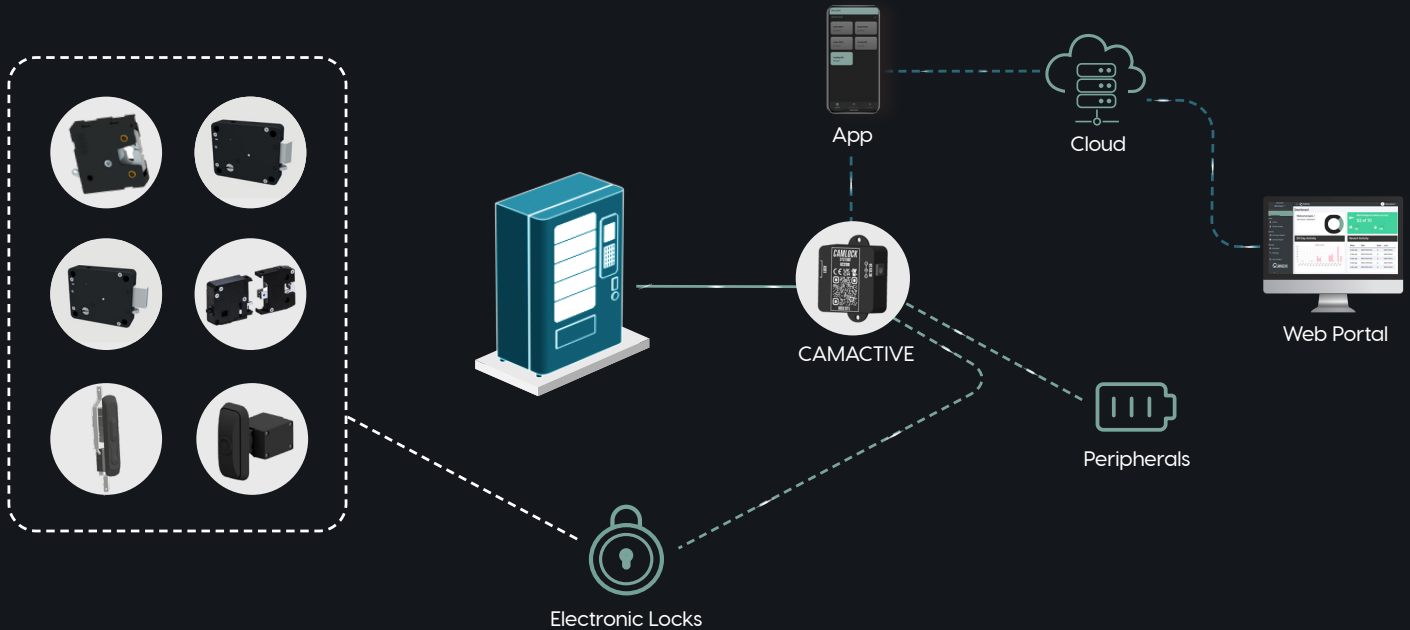
Compatible with the full range of Camlock electronic locks



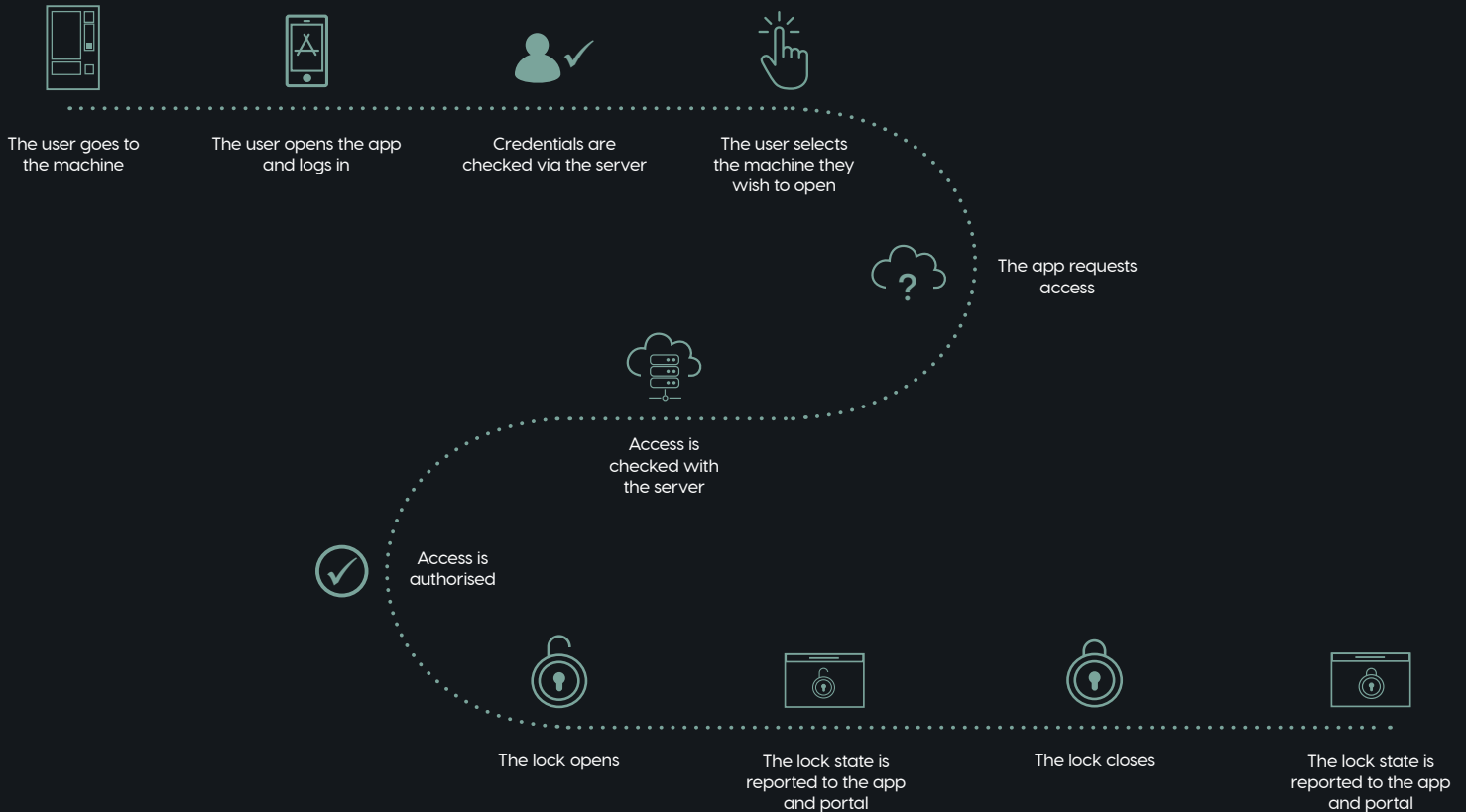
## Mechanical override

Camlock electronic locks incorporate mechanical overrides for peace of mind

# CAMACTIVE SYSTEM OVERVIEW



# HOW DOES CAMACTIVE WORK?



# CAMACTIVE APP

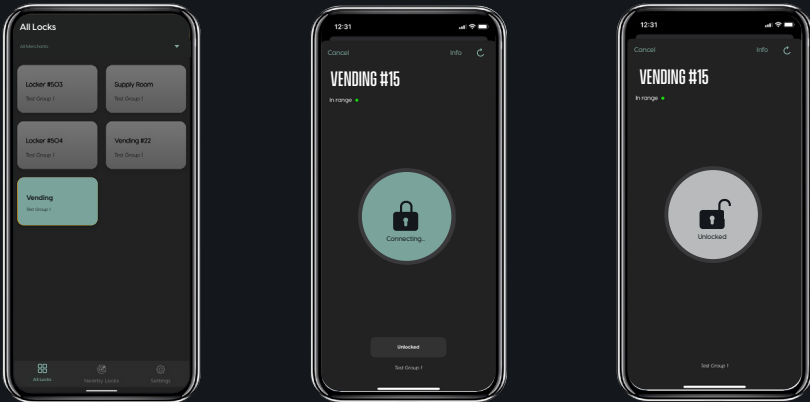


CAMACTIVE allows users to control locks with an intuitive, easy to operate mobile app, which acts as a virtual key and access control credential.

Available for both Android and iOS, each user is assigned an individual login.

The app is preconfigured to automatically show all the machines in range without the need to enter specific machine details.

Opening the locks is as simple as selecting the machine and tapping the open button.



# CAMACTIVE PORTAL

The CAMACTIVE portal gives clear visibility by recording data such as the date, time, duration, and identity of individuals accessing the machine, and from this, customisable reports and dashboards can be generated. This transparency can be critical in loss prevention, maintenance, efficiency of operations, and helps identify any anomalies or issues promptly. With CAMACTIVE users can control permissions and limit access scheduling giving complete control of each machine.

The screenshot shows the CAMACTIVE Portal interface. At the top, it displays 'Merchant Test Group 1' and the user 'Steve Martin'. The main dashboard area includes a 'Welcome back!' message, a 'Beta Package (try before you buy)' banner showing '92 of 10' (with 26 users and 66 locks), and a '30 Day Activity' bar chart. A sidebar on the left contains navigation options like Dashboard, Locks, Reports, and Settings. The CAMACTIVE logo and version information are at the bottom.

Two overlapping notification cards for 'Lock Event' by 'steve.martin'. The top card shows 'Lock Opened' with a green padlock icon, and the bottom card shows 'Lock Closed' with a red padlock icon. Both notifications include a 'just now' timestamp and a close button.

A notification card for 'Justin CAMACTIVE' showing 'Lock Closed' 1 hour ago. Below the notification is a detailed view of the lock's information.

Details		History	
<b>Name</b>	Justin ACS100 1	<b>Lock Model</b>	S100
<b>Lock Serial Number</b>	S100000578	<b>Controller</b>	ACS100000564
<b>Access Token</b>	X19TREWMTZWxkXm...		
<b>Expires</b>	in 5 minutes		
<b>Last Activity</b>	6 months ago		

Close

# RETURN ON INVESTMENT



## Simplifies Key Management by:

- Reducing the need to replace broken or lost keys
- Reducing the cost of administering large key suites
- Reducing or eliminating security issues of missing keys



## Minimises costs by:

- Eliminating the need for replacement keys
- Reducing the cost of labour and travel



## Reduces Route Substitution for:

- Getting keys to substitute route operator
- Returning keys to office or regular route operator
- Excess labour costs



## Enhanced Accountability:

- Increased personnel visibility - where they are and for how long
- Managing route efficiency
- Reduced losses in product and cash



## Streamline Management:

- Automated reporting reduces time, resources and manual work
- Less manual work and more data

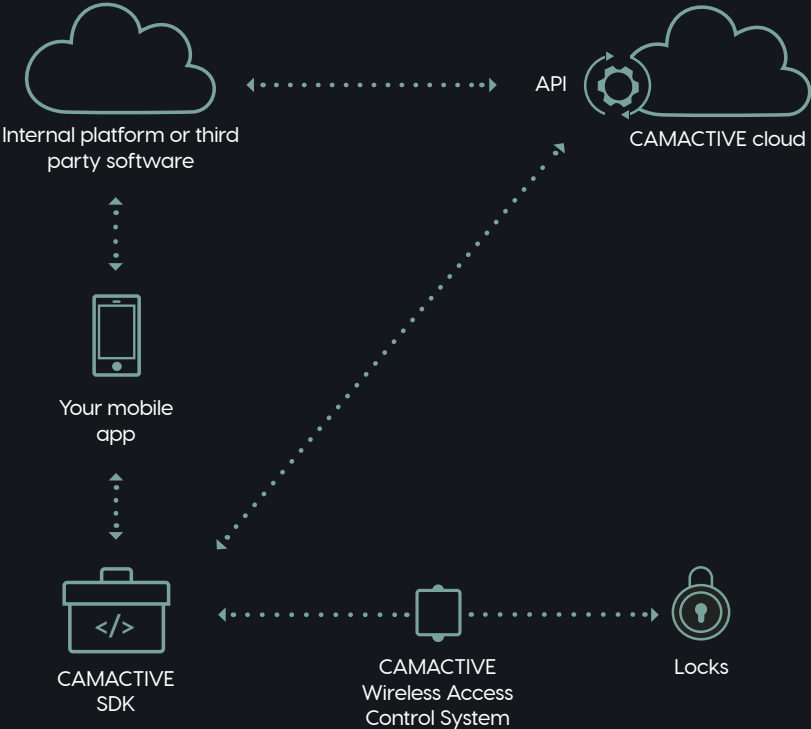


## Measured Productivity and Enhanced Route Management:

- Ability to analyse and predict route efficiency
- Streamline fleet usage
- Reduce overtime



# SDK & API



CAMACTIVE offers seamless integration with a wide range of systems and platforms. With our intuitive SDKs for both iOS and Android, developers can easily incorporate CAMACTIVE into their mobile applications.

Additionally, our robust API supports the administration portal, ensuring smooth and efficient management. To aid in the integration process, we provide world-class documentation, making it easy for developers to implement and utilise CAMACTIVE effectively.

# LOCKING & ENHANCEMENTS

Our electronic latching products deliver a reliable, keyless and concealed solution to access management.

Electronic locks negate the need for physical keys, providing a secure solution and reducing costs in replacement keys and locks.

Our latches suit a range of requirements, from high strength to specially constrained applications.

We offer a range of enhancements, including:

- Capacitor boards
- Batteries
- Wiring harnesses
- Mechanical and electronic overrides



Series 100

High strength, dual jawed rotary latch



Series 200 & 300

Robust slam and dead bolt latches



Series 400

Micro latching system available as slam or rotary latch



Series 500

Electronic Swing handle



Series 600

Electronic T-handle



Actuator

A versatile device which can pull, push or block existing bolt work

**GLOBAL COMPANY**  
**LOCAL HOME**

---

With offices in the UK, USA and Taiwan, we serve customers in over 140 countries spanning across the major continents including Europe, Africa, Oceania, Southern Asia, and North and South America.

Our dynamic, international team offers something different: The flexibility of a small, agile company, with the global footprint and technical expertise of an international corporation.



**CAMLOCK SYSTEMS INC**

North & South America Sales  
109-B Industrial Drive  
Southington  
CT 06489  
USA

Toll free: +1 866-699-3575  
Tel: +1 860-378-0302  
usasales@camlock.com

**CAMLOCK SYSTEMS LTD**

Head Office & EMEA Sales  
Unit 3, Park View  
Compton Industrial Estate  
Eastbourne, East Sussex  
BN23 6QE,  
United Kingdom

Tel: +44 (0)1323 410996  
enquiries@camlock.com

**CAMLOCK SYSTEMS COLTD**

Manufacturing Hub and APAC  
Sales  
1F, No. 119 Shuangfeng Road  
Xinzhuang District  
New Taipei City 242  
Taiwan

Tel: +886-975-381-700  
clinton.lin@camlock.com

**SMARTER  
LOCKING**