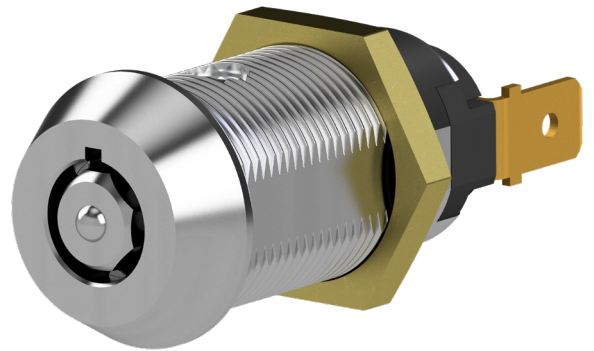




# SERIES 28

## SINGLE POLE, EXTRA SECURITY 7 PIN, SOLID BRASS SWITCHLOCK



### OVERVIEW

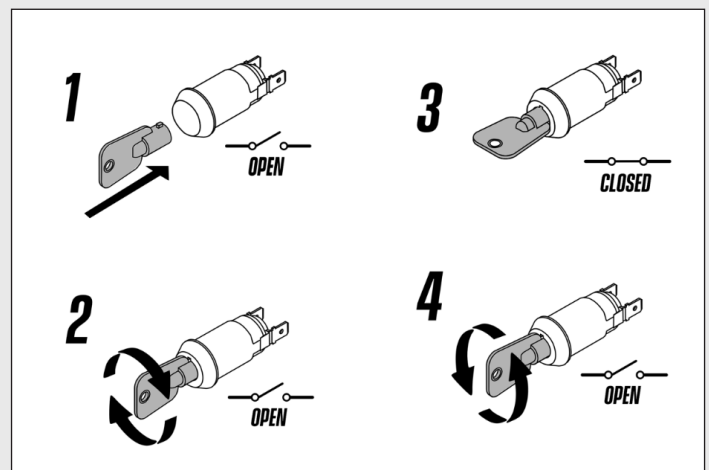
A switchlock offering the advantages of Camlock's Octagon Core and seven radial pin tumbler mechanism, including over half a million different key combinations.

To comply with CE regulations, the Series S28 Switchlock is rated at less than 30 volts at 10A. LVD test certificate available on request.

This switchlock is suitable for applications where simple key controlled switching is required, with the added advantage of being able to form part of a wider keyed alike system using other conventional 7 pin radial pin tumbler items. The switch has a single pole off/on configuration

### TECHNICAL DATA

Operation types	N/O-C Key retained N/O-C Key removable Momentary N/O-C
Pick and manipulation resistance	Medium
Physical attack resistance	Medium
Key differs	500,000
Mechanism	Octagon
Material	Brass



**SMARTER  
LOCKING**