



CAMLOCK
SYSTEMS

PRODUCT SPECIFICATION

Series 100

SERIES 100

**NEW MOTORISED ROTARY LATCH.
PATENTED DESIGN WITH DUAL,
STAINLESS STEEL LOCKING JAWS
AND A GEARED MOTOR.**



OVERVIEW

A unique solution to concealed latching.

This new patented rotary latch is ideal for high volume applications. Thanks to its unique design with dual locking jaws, it utilises the compression strength of steel to prevent forced unlocking.

***power requirements are related to the force applied to jaws**

Lock features

- Low energy consumption: 0.4A peak current
- Permits remote monitoring, audit trails and alarming
- Flexible mounting options and vertical panel movement
- Push-to-close convenience for any application
- Accepts signals from any electronic actuation source

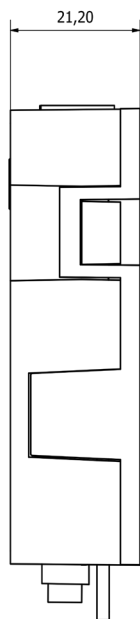
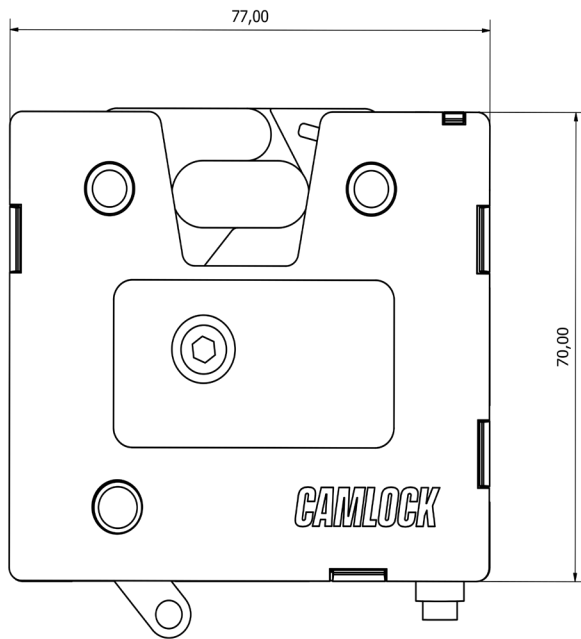
TECHNICAL DATA

Monitoring	Built-in monitoring switch indicates latch is locked or unlocked
Power requirements	150mA* @ 12V or 24V AC/VDC
Sprung door opening	Variable spring tension: Spring open or pull to open
Materials	Glass-reinforced, flame resistant plastic housing. Stainless steel jaws
Finish	Smooth black finish
Mechanical override	Yes - fitted with release lever
Patented	Yes - patent pending
CE tested	Yes
IP rating	IP65
Cycle testing	75,000 cycles
Forced opening	Will withstand 7000N of force
Contact rating	0.5amp @ 200vDC
Operating temperatures	65°C to -20°C
Maximum pre-load on latch	1000N
Fixing	3 x M5 fixing bolts

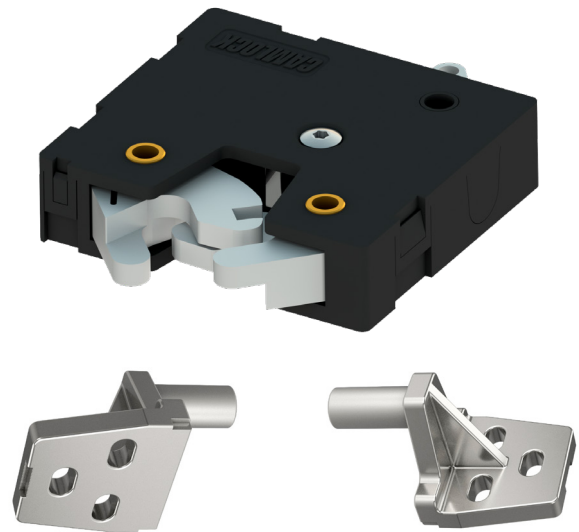
**SMARTER
LOCKING**



TECHNICAL DRAWINGS



ADDITIONAL PRODUCT IMAGES



Locking strike

Locking strike available to order alongside the Series 100 Hardware. Please request this at the point of placing your order.

